

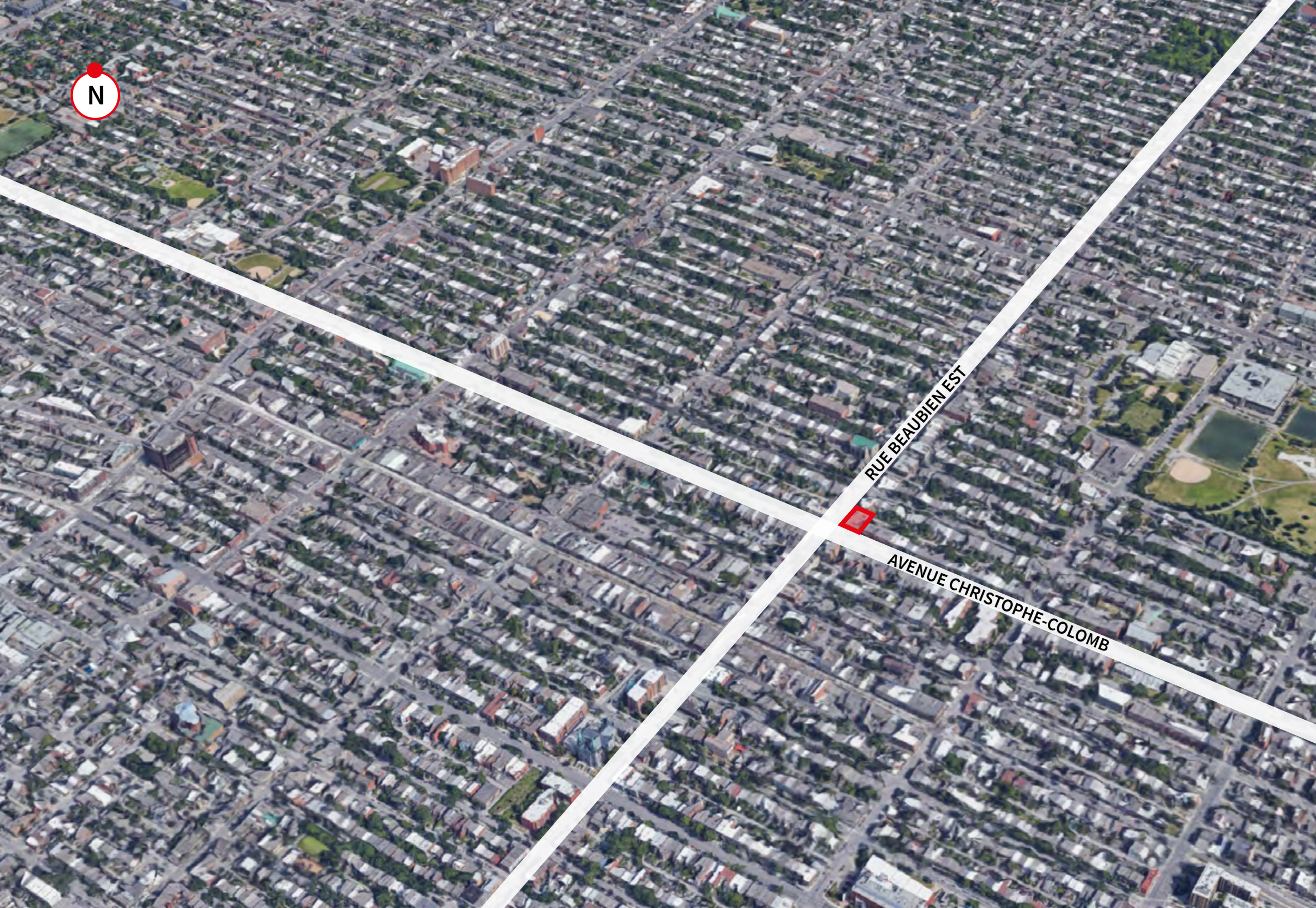


Retail

For Lease

6455-6461

AVENUE CHRISTOPHE-COLOMB
Montreal, QC



Overview

6455, avenue Christophe-Colomb is a unique business opportunity at Montreal. Located close to the station Beaubien metro station in the heart of Rosemont-La-Petite-Patrie, this site is surrounded by several residential neighborhoods formed of multi-story houses and is exposed to heavy foot traffic. The property already offers excellent showcase for Jean Coutu and presents rental opportunities on the ground floor as well as office spaces available on the second floor.

Project Overview

- Shopping center on the very busy avenue Christophe-Colomb
- Anchored by Jean-Coutu Pharmacy
- Major intersection close: Beaubien and Christophe-Colomb
- Located in a commercial area;
- A few minutes from the motorway Trans-Canada Highway
- Located at walking distance from the Beaubien metro

Property details

SPACE A | 1,000 SF

SPACE B | 800 SF

SPACE C | 881 SF

AVAILABILITY | Immediately

NET RENT | Contact Listing Brokers

ADDITIONAL RENT | \$14.60 PSF (est. 2021)

Demographics

	1km	3km	5km
 Population	39,022	311,147	664,130
 Daytime Population	24,634	223,388	798,193
 Avg. Household Income	\$69,152	\$78,270	\$76,045
 Median Age	35.6	36.3	36.8

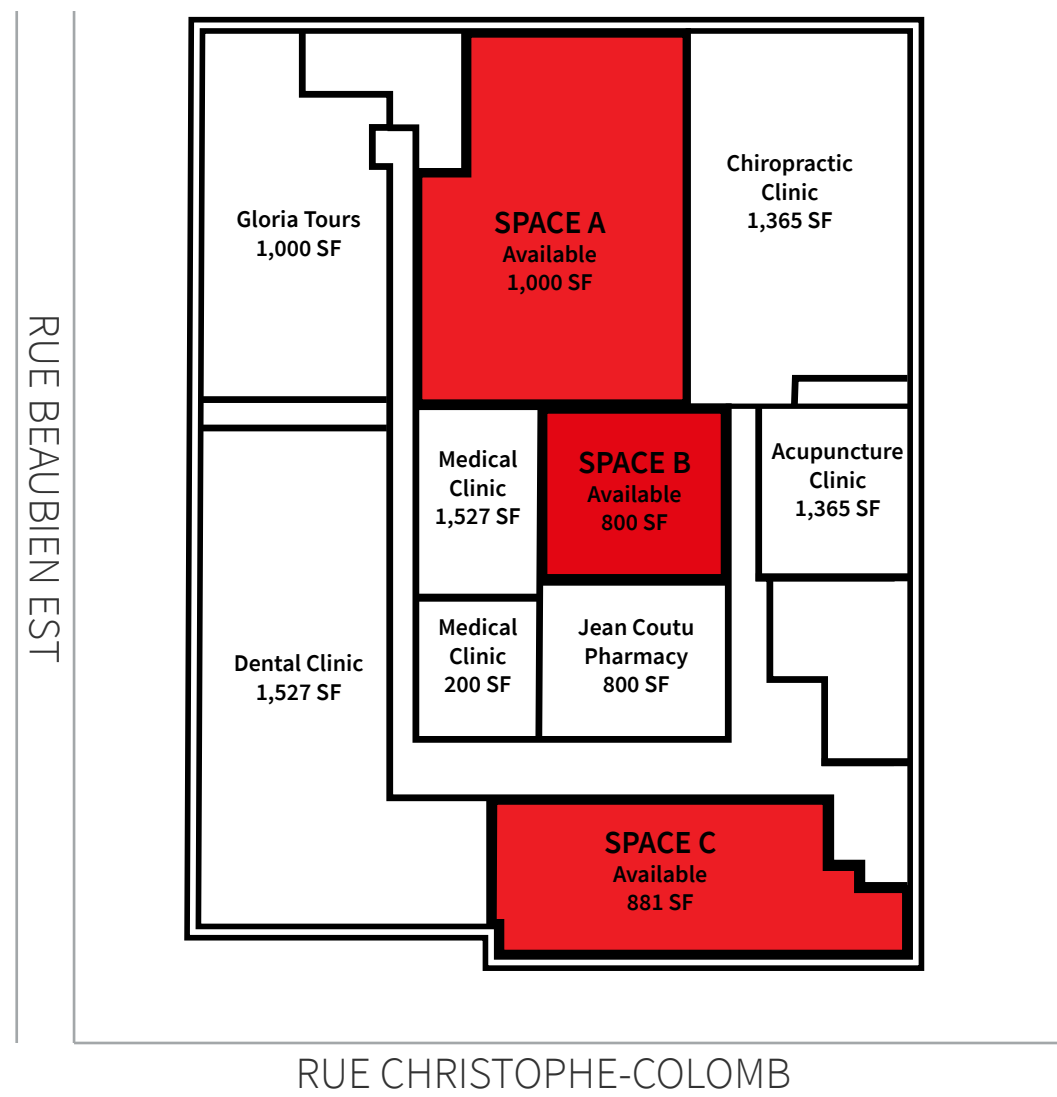
Source: Statistics Canada, 2020

Floor plan

SPACE A | 1,000 SF

SPACE B | 800 SF

SPACE C | 881 SF



FOR LEASE | 6455-6461 AVENUE CHRISTOPHE-COLOMB

Manon Larose*

Senior Vice President, Retail

+1 438 990 8968

Manon.Larose@am.jll.com

Jesse Provost**

Sales Associate, Retail

+1 514 347 4433

Jesse.Provost@am.jll.com



Although information has been obtained from sources deemed reliable, Owner, Jones Lang LaSalle, and/or their representatives, brokers or agents make no guarantees as to the accuracy of the information contained herein, and offer the Property without express or implied warranties of any kind. The Property may be withdrawn without notice. If the recipient of this information has signed a confidentiality agreement regarding this matter, this information is subject to the terms of that agreement. ©2020. Jones Lang LaSalle. All rights reserved.

*Certified Real Estate Broker DA

**Commercial Real Estate Broker