



# Corner Retail For Lease

908 Queen Street East











## Overview

Located in Leslieville, one of Toronto's most desirable neighborhoods, 908 Queen Street East offers an opportunity to secure a high-exposure retail location on the northeast corner of Queen Street East & Logan Avenue. Boasting excellent walk scores, a TTC stop at front floor, and patio potential, this location is suitable for a variety of retail uses.

With Leslieville's trendy restaurants and coffee shops, eclectic local merchants, convenient transit options, and new residential developments, the area has experienced substantial growth and has become a destination for visitors.

## Demographics

	0.5km	1km	1.5km
 <b>Population</b>	8,412	25,722	47,403
 <b>Daytime Population</b>	7,783	21,861	40,326
 <b>Avg. Household Income</b>	\$119,523	\$117,100	\$113,722
 <b>Median Age</b>	39	39	39



# Property Details

**GROUND FLOOR** | 1,644 SF

**AVAILABLE** | Immediately

**TERM** | 5 - 10 Years

**NET RENT** | Please contact Listing Agents

**ADDITIONAL RENT** | \$20.50 PSF (est. 2020)

# Highlights

- “Right sized” corner retail space
- Excellent frontage on Queen Street East and Logan Avenue
- Patio potential
- 501 Queen & 503 Kingston Streetcars stop at front door
- Neighborhood co-tenants include: Starbucks, Nutbar, A&W, Freshii, rowefarms, Circle K and more





# Neighbouring Retail

McLeary Playground		Jimmie Simpson Park	
<b>MCGEE STREET</b>			
Real Estate Homeward Brokerage	807A		
Residential	811-807		
Wholesome Pharmacy	811A		
Residential	813		
Residential	815		
K.L. Coin Co	817A		
Residential	819-817		
Baird MacGregor Insurance Brokers	825		
<b>EMPIRE AVENUE</b>			
Woodgreen Community Housing	835		
<b>BOOTH AVENUE</b>			
Vacant	875		
Vacant			
Circle K			
Freshii	875		
A&W			
Starbucks			
<b>LOGAN AVENUE</b>			
Purple Penguin Café	889		
Leslieville Cheese Market	891		
Rowe Farms	893		
Vacant	897		
Vacant	901-903		
Nut Bar	905-907		
Glass Monocle Eyecar	909		
Vacant	911		
Mercury Espresso	915		
<b>MORSE STREET</b>			
Logan Motors	917		
Black's Toronto Veterinary Hospital	923		
Leslieville Pumps/S&S Motors	929		
Good Neighbour	935		
Benjamin Moore	943		
<b>CARLAW AVENUE</b>			
Toronto Vietnamese Victory Church	947		
South Riverdale Community Health Centre	955		
<b>HEWARD AVENUE</b>			
Baby on the Hip	969		
Te Aro	983		
Garden's Path Floral Design	983		
Zig Zag Collectables	985		
Periodontist	987		
Restore Integrative Health	989		
The Beauty Collective	991		
Gordon's Pub Kitchen	993		
6 storey residential development (16 residential units, 2,619 SF of retail)	1001		
<b>PAPE AVENUE</b>			
<b>QUEEN STREET EAST</b>			
<b>LOGAN AVENUE</b>			
908 908 Queen Street East			
Juzz Sushi	912		
Queen Books	914		
The Ten Spot	916		
Ollie Quinn	918		
Ed's Real Scoop	920		
Red Sandcastle Theatre	922		
Community Donation Centre (Value Village)	924		
Queen Street Dental Centre	930		
Dock Coffee	932		
Fuzz Wax Bar	934		
Maral Salon	936		
Prime Mechanical	938		
Studio-One	940		
Tattooing Supplies	942		
Platis Cleaners	944		
Jennifer Ornstein Office	946		
The Bone House	948		
My Roti Place	948		
Mona Spa Nails	950		
TIZZ	952		
Reliable Fish & Chips	954		
<b>VERRAL AVENUE</b>			
Shoppers Drug Mart	970		
<b>CARLAW AVENUE</b>			
New Tenant	972		
New Tenant	974		
Morrison & Co Salon (Aveda)	976		
New Tenant	978		
Vacant (Under Construction)	980		
WYLA bar	996		
Lyfe Meditation	998		
Woodgreen Pharmacy	1000		
Province of Canada	1004		
Vacant	1006		
Eastside Social	1010		
Baldini	1012		
Tasty Chicken House	1014		
<b>BOSTON AVENUE</b>			
Boston Discount Store	1020		
MexiCados Burritos & Bowls	1022		
Quick Clean Laundry Centre	1024		
ateaze	1026		
Julie Dabrusin, M.P.	1028		
Queen & Jones PawnBrokers	1030		
Avling Kitchen and Brewery	1042		
Max's Wholesale	1044		
Scotiabank	1046		
<b>PAPE AVENUE</b>			



## Daily Ridership



55,100  
501 Queen Streetcar



2,100  
503 Kingston Streetcar



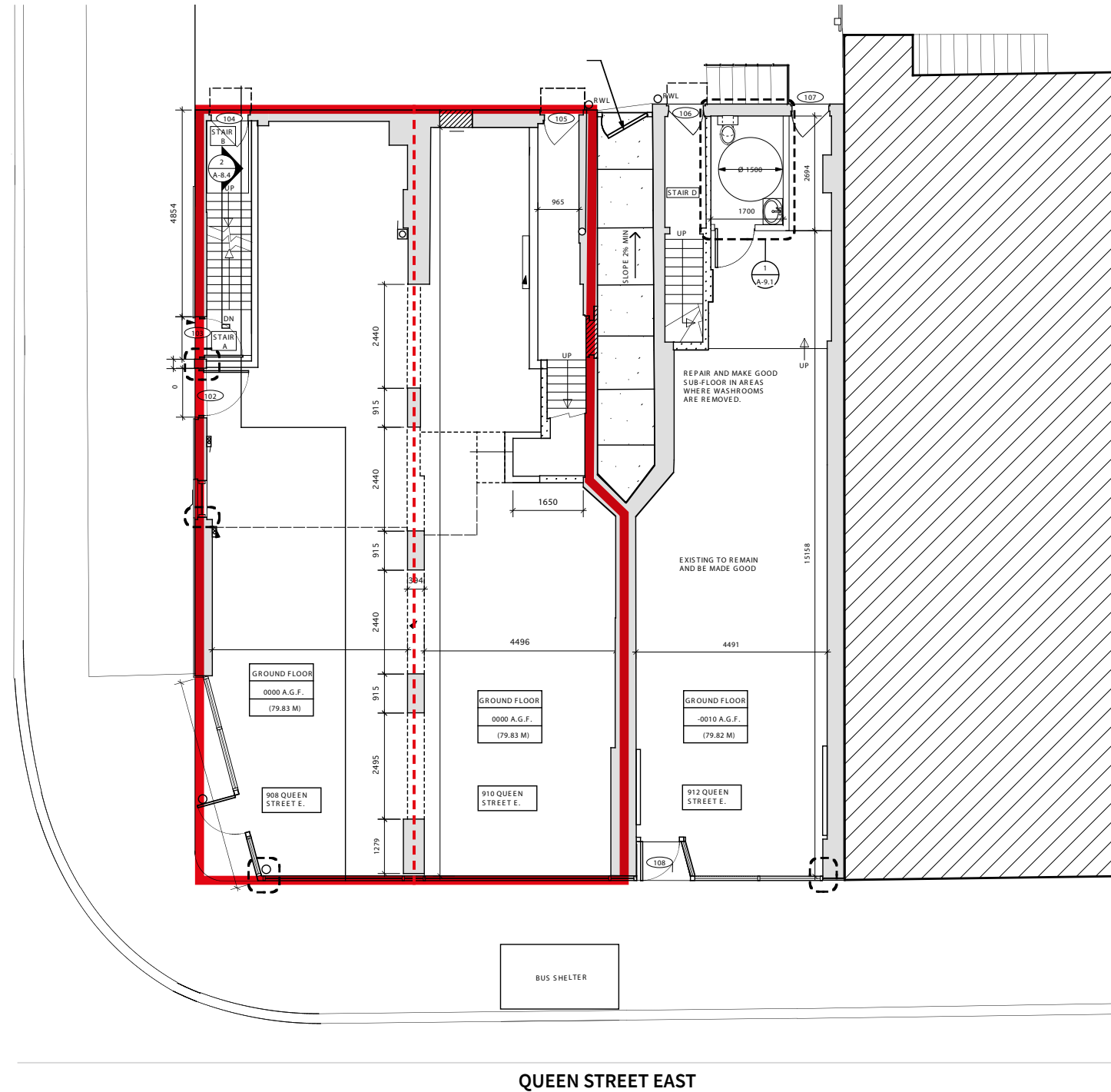
86  
Transit score



83  
Walk score

# Floor Plan

GROUND FLOOR | 1,644 SF

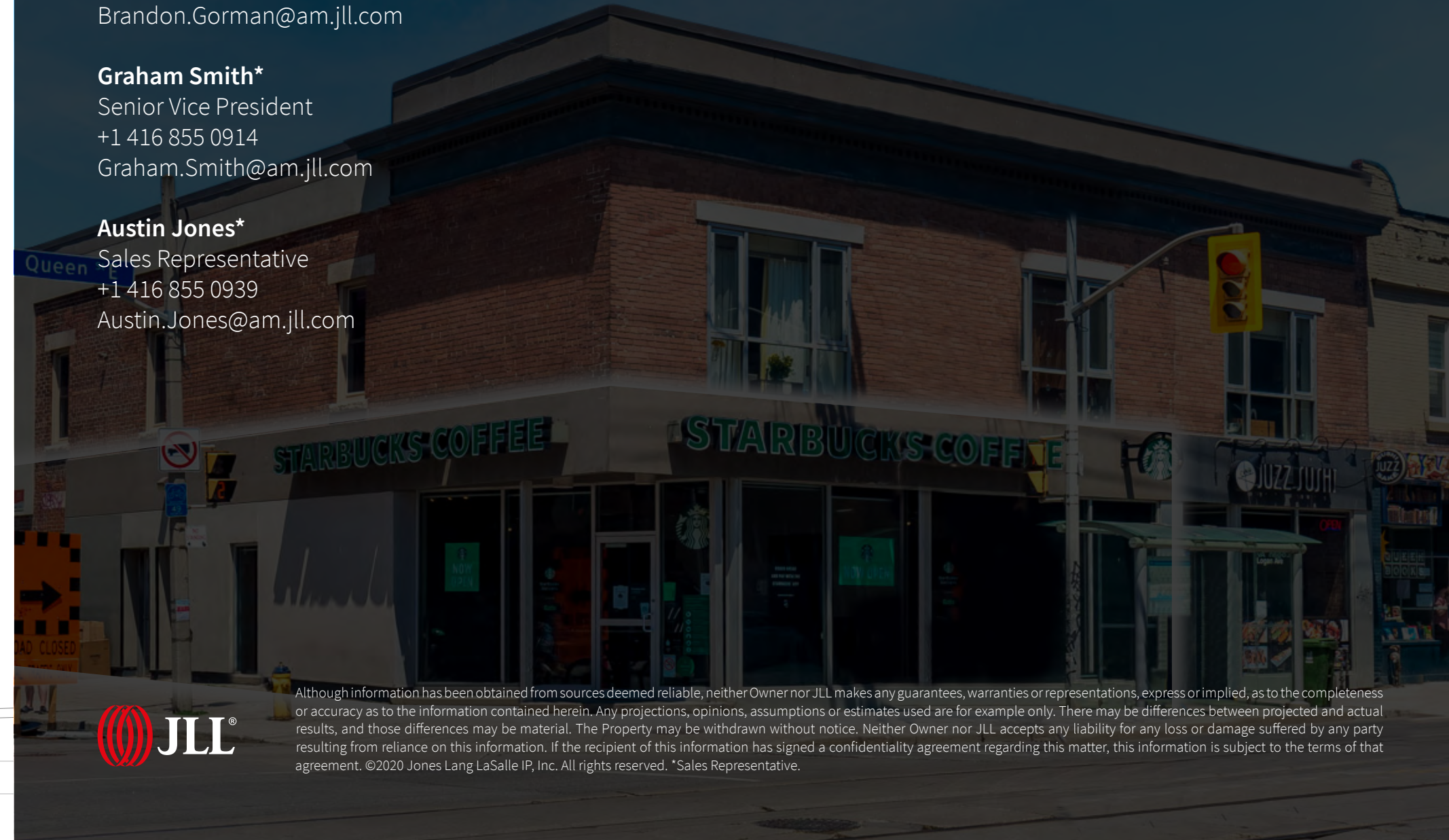


FOR LEASE | 908 QUEEN STREET EAST

**Brandon Gorman\***  
Senior Vice President  
+1 416 855 0907  
Brandon.Gorman@am.jll.com

**Graham Smith\***  
Senior Vice President  
+1 416 855 0914  
Graham.Smith@am.jll.com

**Austin Jones\***  
Sales Representative  
+1 416 855 0939  
Austin.Jones@am.jll.com



Although information has been obtained from sources deemed reliable, neither Owner nor JLL makes any guarantees, warranties or representations, express or implied, as to the completeness or accuracy as to the information contained herein. Any projections, opinions, assumptions or estimates used are for example only. There may be differences between projected and actual results, and those differences may be material. The Property may be withdrawn without notice. Neither Owner nor JLL accepts any liability for any loss or damage suffered by any party resulting from reliance on this information. If the recipient of this information has signed a confidentiality agreement regarding this matter, this information is subject to the terms of that agreement. ©2020 Jones Lang LaSalle IP, Inc. All rights reserved. \*Sales Representative.