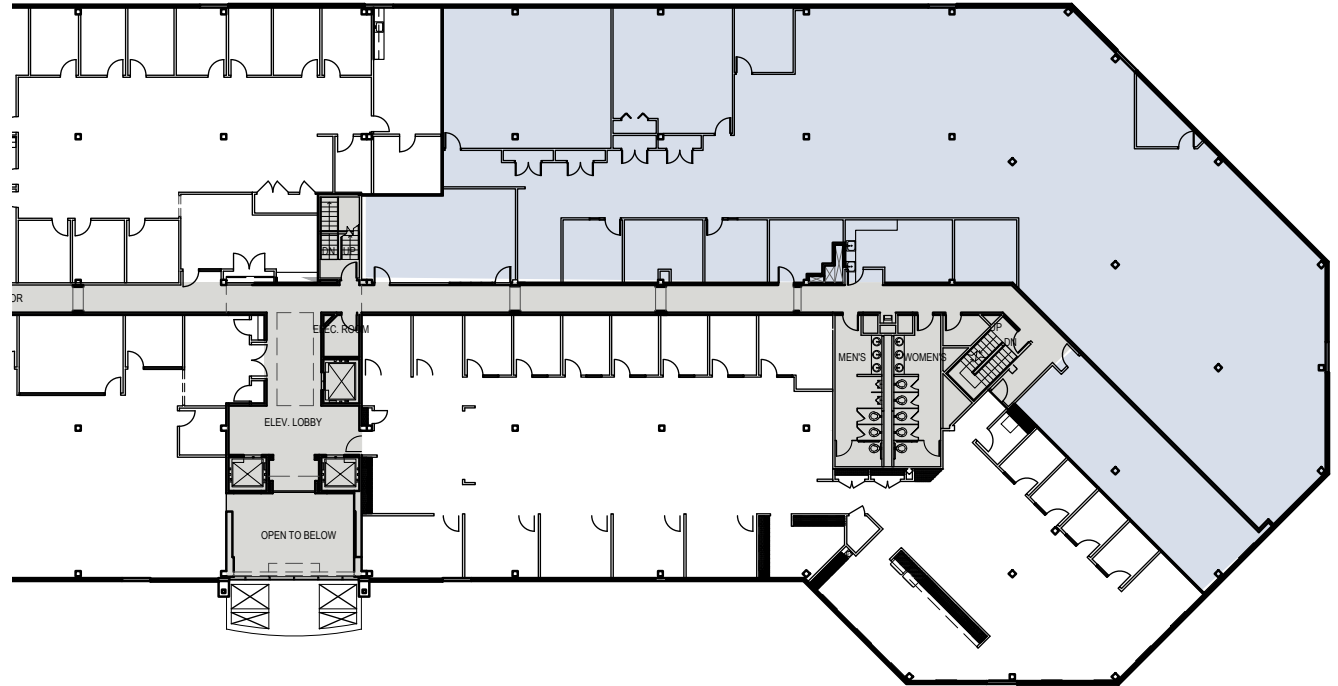
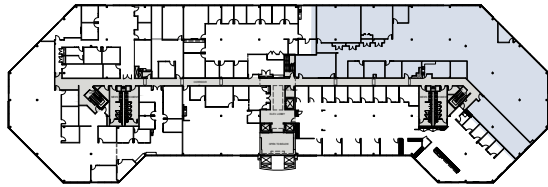


Suite	220
Floor	Second
Sizes	12,470 RSF



# 200 NORTH WARNER ROAD

200 N Warner Road, King of Prussia, PA 19067  
200NorthWarnerRoad.com

## FOR LEASING INFORMATION

**Whitney Hunter**  
+1 610 249 2261  
whitney.hunter@jll.com

**Mike MacCroy**  
+1 610 249 2270  
mike.maccroy@jll.com

**Jones Lang LaSalle Brokerage, Inc.**  
550 E. Swedesford Road, Suite #260  
Wayne, PA 19087  
jll.com/philadelphia

©2023 Jones Lang LaSalle Brokerage, Inc. All rights reserved. All information contained herein is from sources deemed reliable; however, no representation or warranty is made to the accuracy thereof.

