



**Atapco** | DC LOGISTICS

New Class A  
Industrial Building  
**Now Available**

2300 CRAFTSMAN CIRCLE, HYATTSVILLE, MD

<https://www.atapcodcusa.com/>



# About the property



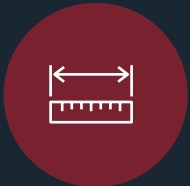
Now Available



180,000 SF



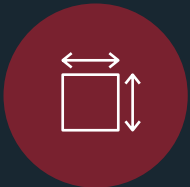
228'



50x50 columns



32' Clear



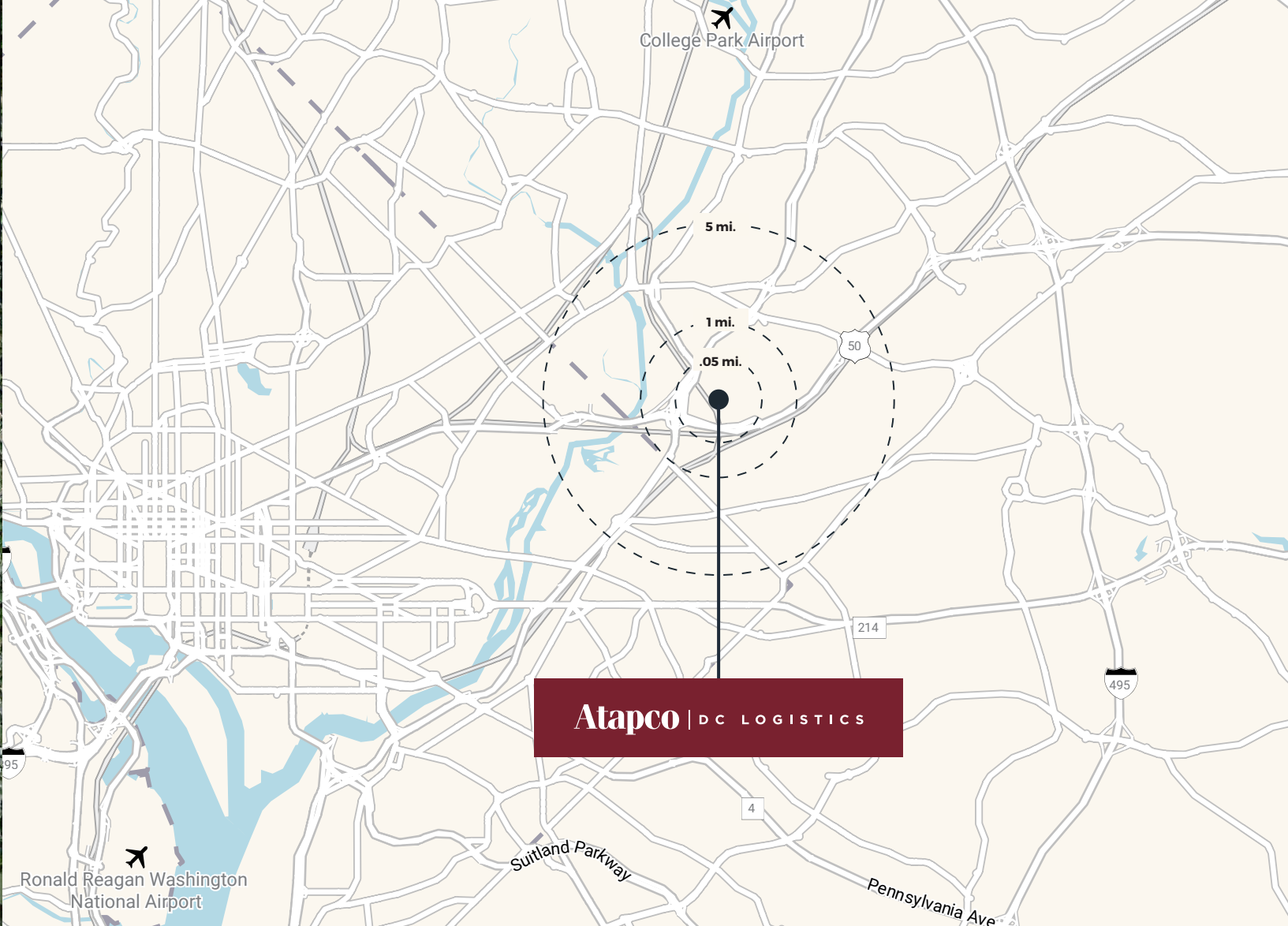
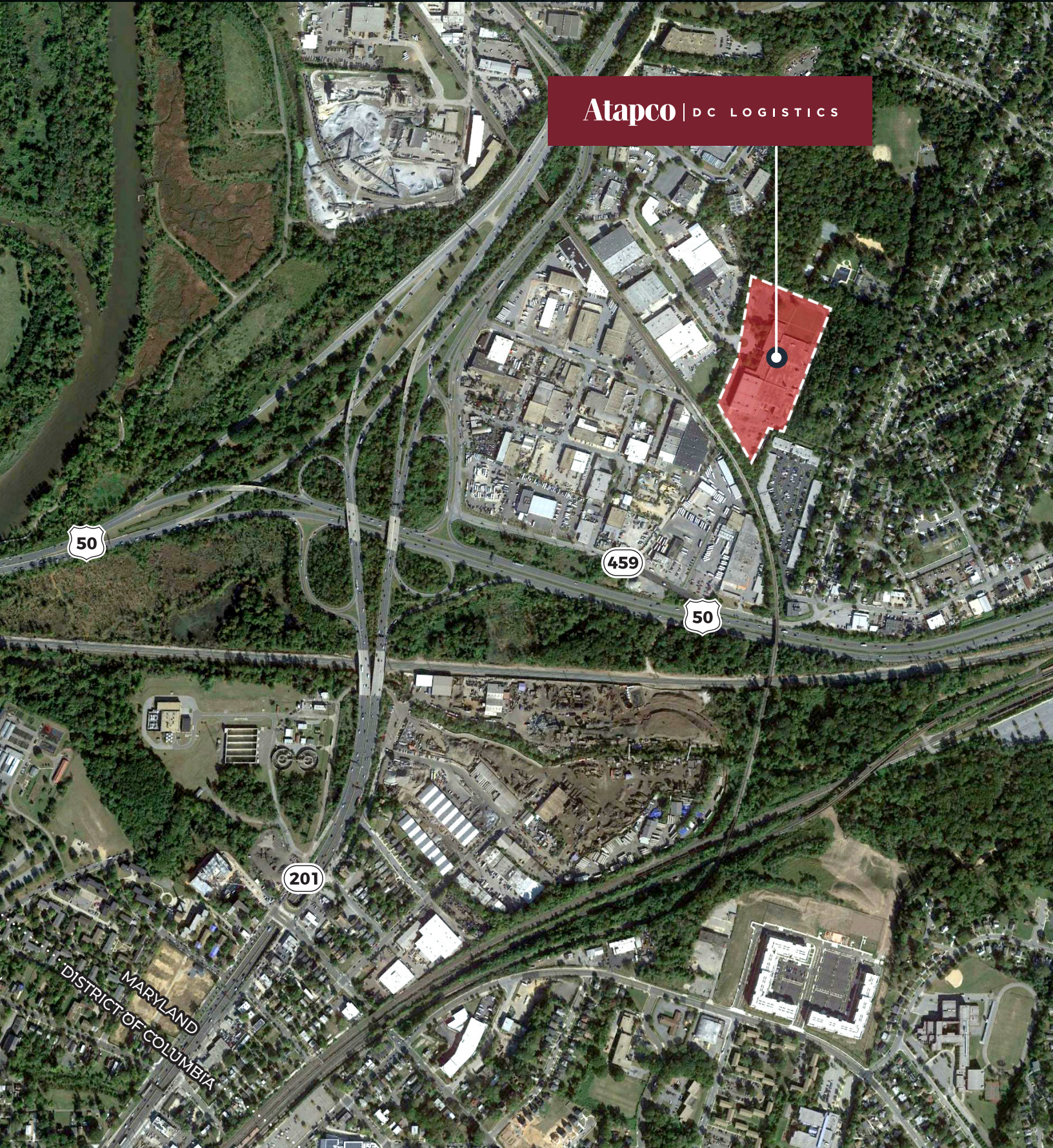
1.25 acres of outside storage



45 docks  
1 drive-in



# Location



# Access

.05

miles to  
Rt. 50

1.0

mile to  
District Line

5.0

miles to  
Washington, Beltway



# Highlights and Details

	2 mile	5 mile	10 mile
Average Household income	\$77,394	\$98,434	\$129,173
Median Household Income	\$57,215	\$73,626	\$91,770
2020 Population	68,603	541,848	1,705,829
2025 Population Projection	69,520	553,020	1,743,734
2020 Households	25,205	201,168	697,770
2025 Household Projection	25,586	205,662	715,080





# Atapco | DC LOGISTICS

## Contact Us

**John Dettleff**  
+1 703 485 8831  
[john.dettleff@jll.com](mailto:john.dettleff@jll.com)

**Dan Coats**  
+1 703 891 8410  
[dan.coats@jll.com](mailto:dan.coats@jll.com)

**Abbot Wallenborn**  
+1 703 891 8437  
[abbot.wallenborn@jll.com](mailto:abbot.wallenborn@jll.com)



Although information has been obtained from sources deemed reliable, neither Owner nor JLL makes any guarantees, warranties or representations, express or implied, as to the completeness or accuracy as to the information contained herein. Any projections, opinions, assumptions or estimates used are for example only. There may be differences between projected and actual results, and those differences may be material. The Property may be withdrawn without notice. Neither Owner nor JLL accepts any liability for any loss or damage suffered by any party resulting from reliance on this information. If the recipient of this information has signed a confidentiality agreement regarding this matter, this information is subject to the terms of that agreement. ©2021. Jones Lang LaSalle IP, Inc. All rights reserved.

<https://www.atapcodcusa.com/>