

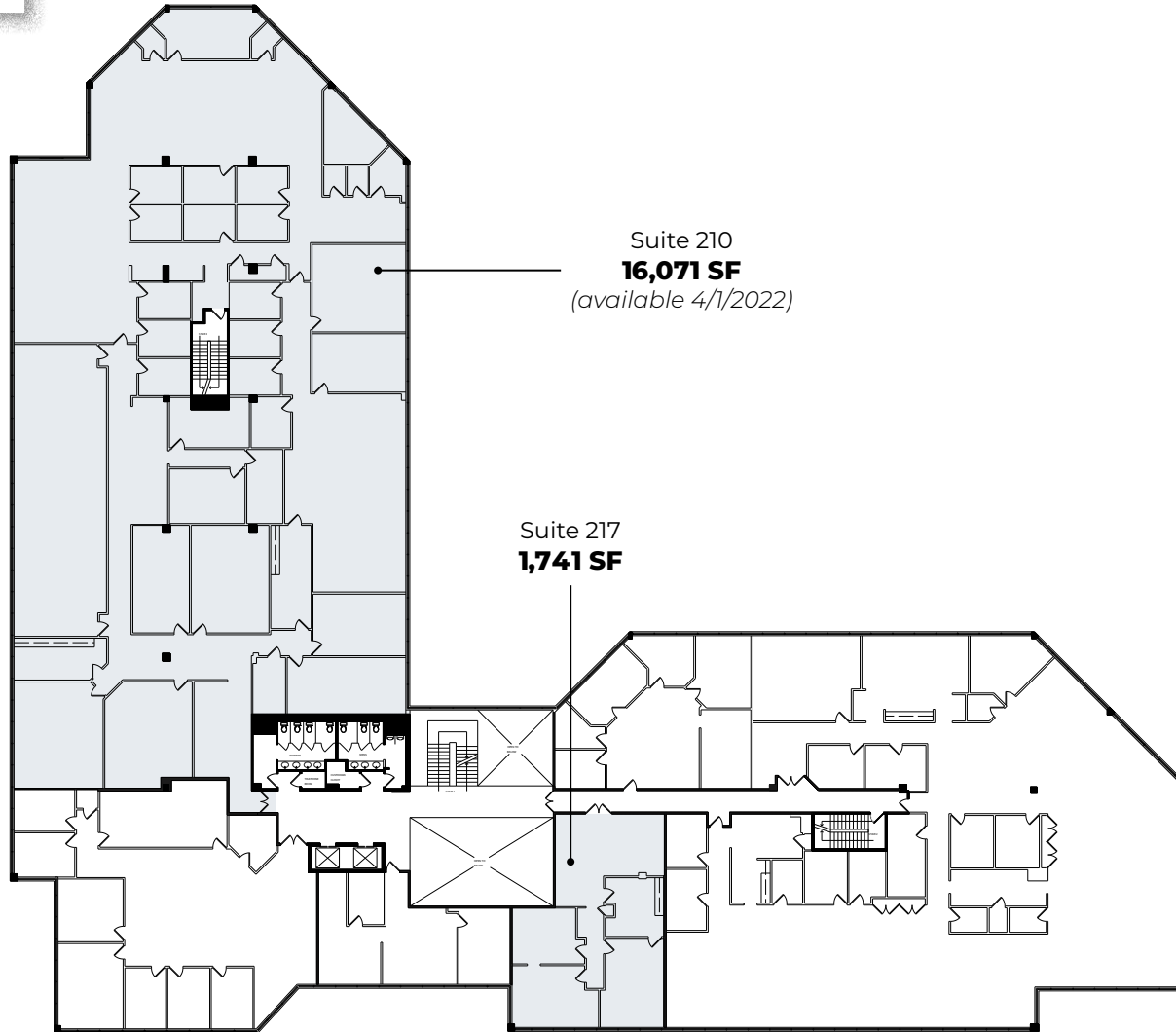


**LINDEN
WOOD**

Lindenwood, Malvern, PA

301 Lindenwood Drive

2nd floor plan



Suite 210
16,071 SF
(available 4/1/2022)

Suite 217
1,741 SF

www.LindenwoodMalvern.com

**Team
contacts**

Adam Shute
+1 610 249 2272
adam.shute@am.jll.com

Chris Werner
+1 610 249 2265
chris.werner@am.jll.com

JLL | Jones Lang LaSalle Brokerage, Inc.
1235 Westlakes Drive, Suite 210, Berwyn, PA 19312
+1 610 249 2255

