



For Sublease

1990 W Nasa Blvd
Melbourne, FL

Up to 69,985 SF available

 **JLL** SEE A BRIGHTER WAY

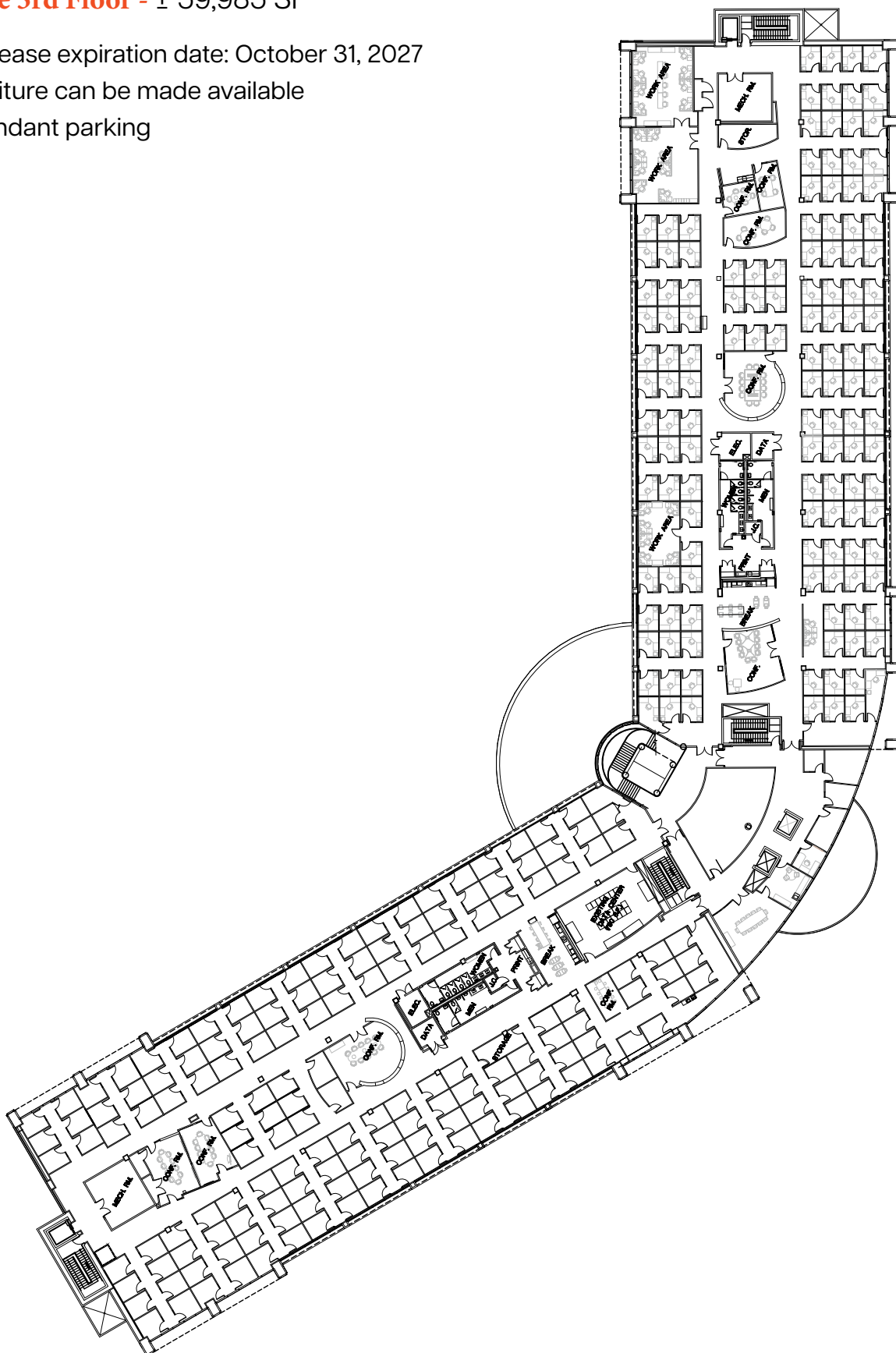
Floorplan



Class A office space available for **Sublease Now**

Entire 3rd Floor - ± 59,985 SF

- Sublease expiration date: October 31, 2027
- Furniture can be made available
- Abundant parking



Photos of 3rd floor space



Class A office space available for **Sublease Now**



CONFERENCE ROOM



BREAK ROOM



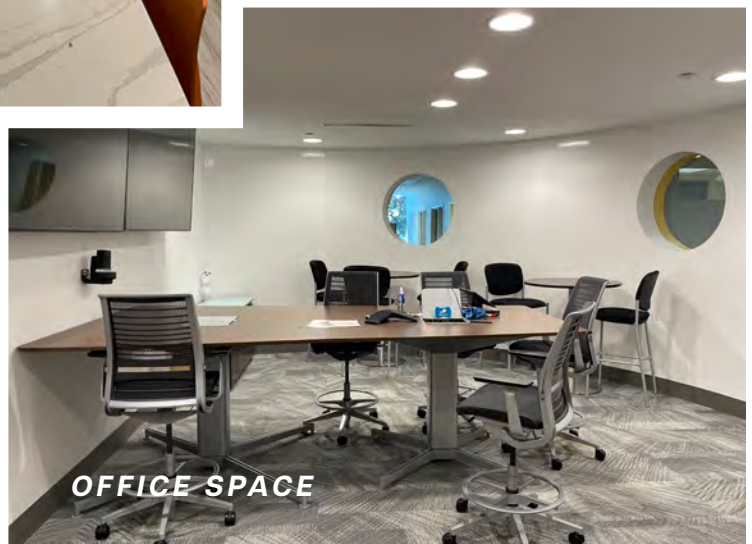
BREAK ROOM



CONFERENCE ROOM



LOBBY



OFFICE SPACE

Floorplan

Class A office space available for **Sublease Now**

Annex/Free-standing building - 10,000 SF

- Can be leased together or separately



Photos of annex space



Class A office space available for **Sublease Now**



CONFERENCE ROOM



SERVER ROOM



ANNEX EXTERIOR



OFFICE SPACE



BREAK ROOM



TRAINING ROOM



Melbourne Highlights

live & work in the perfect location

Suburban amenities, easy access to downtown, a short drive to the beach

Melbourne is a thriving city also known as one of the Space Coast's most populated metro areas. Featuring a prominent business sector, the area is a prime place to live and work. Employees also benefit from a variety of housing options available in the area.

Florida Institute of Technology



3,200 total student undergraduate enrollment with more than 100 student organizations

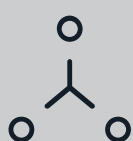


100 countries represented on FIT's campus



the high-tech industry saw a climb by 41.6% or 10,356 jobs over the five-year span
source: thecapitolist.com

Melbourne: did you know....



The City of Melbourne is a hub for high tech and aerospace employers including L3 Harris, Northrup Grumman, Collins Aerospace, Lockheed Martin, Boeing and Thales.



Melbourne is the top 10 Best Cities for STEM jobs according to Forbes

#2 best performing cities in 2023

#3 best wage growth in the U.S.

#4 best places to retire

Area Map



Hotels ●

1. Days Inn by Wyndham Melbourne
2. Courtyard by Marriott Melbourne West

Regional Amenities ●

1. Melbourne Regional Medical Center
2. Melbourne Square Shopping Mall

Restaurants ●

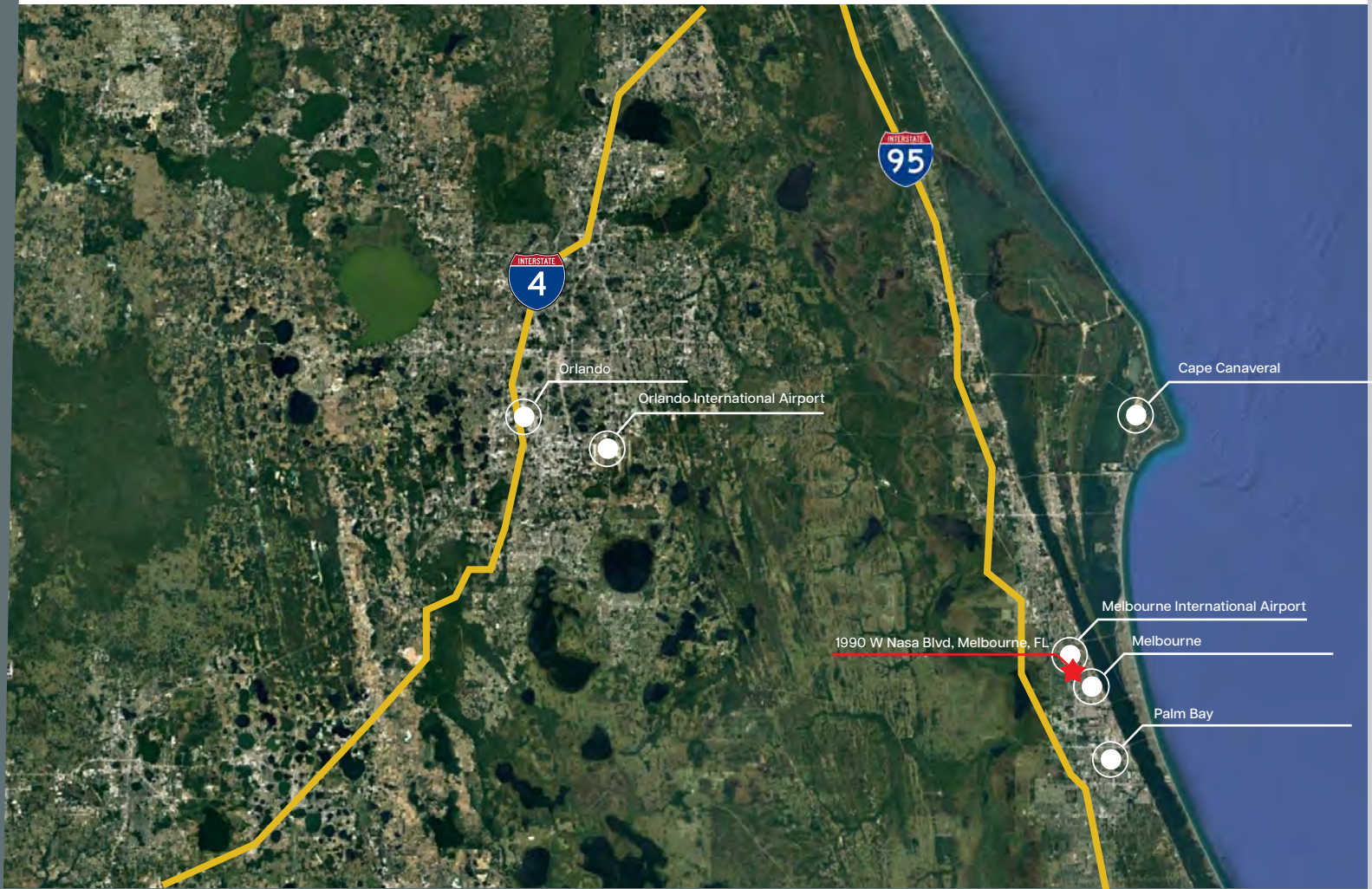
1. Dunkin' (2)
2. McDonald's (2)
3. Country Barn Cafe
4. Bizzarro Pizza
5. Hemingway's Tavern
6. Fiesta Azul Tequila House
7. Cheddar's Scratch Kitchen

8. Starbucks
9. Olive Garden Italian Restaurant
10. Umami Restaurant and Sushi Bar
11. Crystal Buffet Hibachi & Grill
12. Chipotle Mexican Grill

Transportation ●

1. Melbourne International Airport
2. I-95

Area Highlights



DRIVE TIMES

Melbourne International Airport	6 minutes
Palm Bay	15 minutes
Cocoa Beach	35 minutes
Port Canaveral	47 minutes
Orlando International Airport	57 minutes

DEMOGRAPHICS

2022 Total Population

3 miles	57,371
5 miles	143,169
10 miles	307,545

2022 Population Age 25+ with a bachelor's degree

3 miles	7,980
5 miles	21,401
10 miles	46,489

CONTACT US

1990 W Nasa Blvd
Melbourne, FL

Aaron Gray

Managing Director

+1 407 982 8772

aaron.gray@jll.com

W. Malcolm Clayton

Vice President

+1 407 982 8624

malcolm.clayton@jll.com

